

Productive Reconversion in Germany



Active involvement in shaping structural change in the Rhenish lignite mining area

The speaker



Marcus Temburg
Leiter
ZS6 Stabsstelle Strukturwandel

Rhein-Kreis Neuss
Lindenstraße 10
D-41515 Grevenbroich
6. Etage
Raum 657 (Eing. 658)

Fon +49 (0) 2181 601-6100
Fax +49 (0) 2181 601-86100
Mobil -
marcus.temburg@rhein-kreis-neuss.de
www.rhein-kreis-neuss.de



Marcus Temburg
Amtsleiter
Entwicklungs- u. Landschaftsp., Bauen u. Wohnen

Rhein-Kreis Neuss
Lindenstraße 10
D-41515 Grevenbroich
6. Etage
Raum 657 (Eing. 658)

Fon +49 (0) 2181 601-6100
Fax +49 (0) 2181 601-86100
Mobil -
marcus.temburg@rhein-kreis-neuss.de
www.rhein-kreis-neuss.de

Rhine District of Neuss – Structural Data

8 towns/cities and municipalities

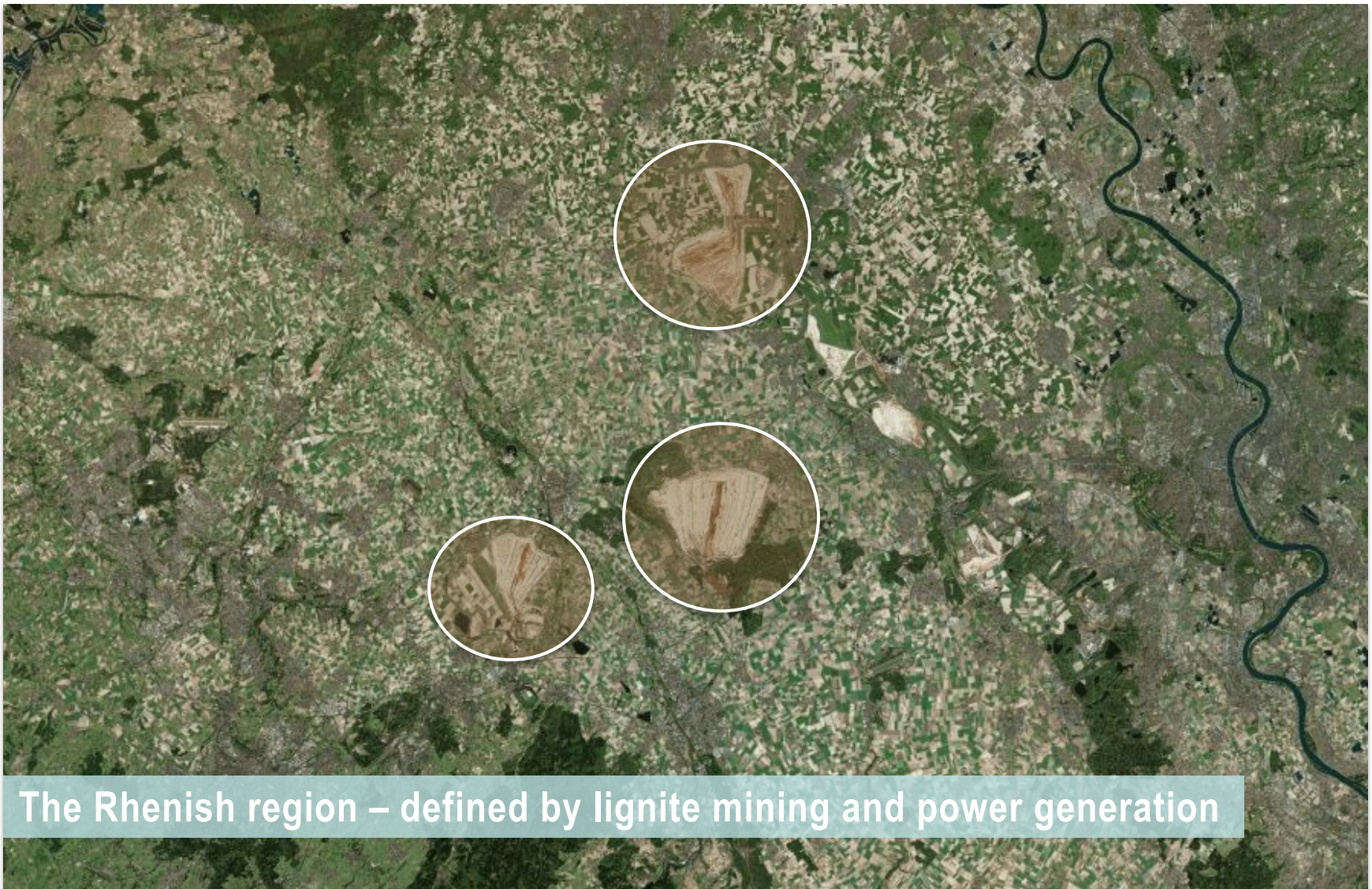
Area of 576 sq. km

approx. 450,000 inhabitants

approx. 150,000 employees



Aerial photo of the Rhenish coal-mining region



The Rhenish region – defined by lignite mining and power generation

The Rhenish lignite mining area



Final report of the Federal Commision

2022

Reduction of lignite power station capacities to 15 gigawatts

- ➔ old 300 MW units and all but two 600 MW units
- ➔ This leaves 3 LPS with optimised plant technology and two 600 MW

2032

Review of feasibility ("opening clause")

2030

Reduction to 9 gigawatts lignite power generation capacity in the market

2038

Closing date for coal power generation (poss. 2035)



Exit schedule for lignite power stations

acc. to Annex 2 (to Sections 40 and 41) of the German Coal Exit Act [KVBG]
Status 13 August 2020

Neurath

Block B	300 MW	31/12/2021
Block A	300 MW	01/04/2022
Block D	600 MW	31/12/2022
Block E	600 MW	31/12/2022
Block F (BoA 2)	1000 MW	31/12/2038
Block G (BoA 3)	1000 MW	31/12/2038

Weisweiler

Block E (or F)	300 MW	31/12/2021
Block F (or E)	300 MW	01/01/2025
Block G (or H)	600 MW	01/04/2028
Block H (or G)	600 MW	01/04/2029

Niederaußem

Block D	300 MW	31/12/2020
Block C	300 MW	31/12/2021
Block G (or H)	600 MW	31/12/2029
Block H (or G)	600 MW (security reserve)	31/12/2029 (by 31/12/2033)
Block K (BoA 1)	1000 MW	31/12/2038

Open-cast mines

Garzweiler	2038
Inden	2029
Hambach	2022

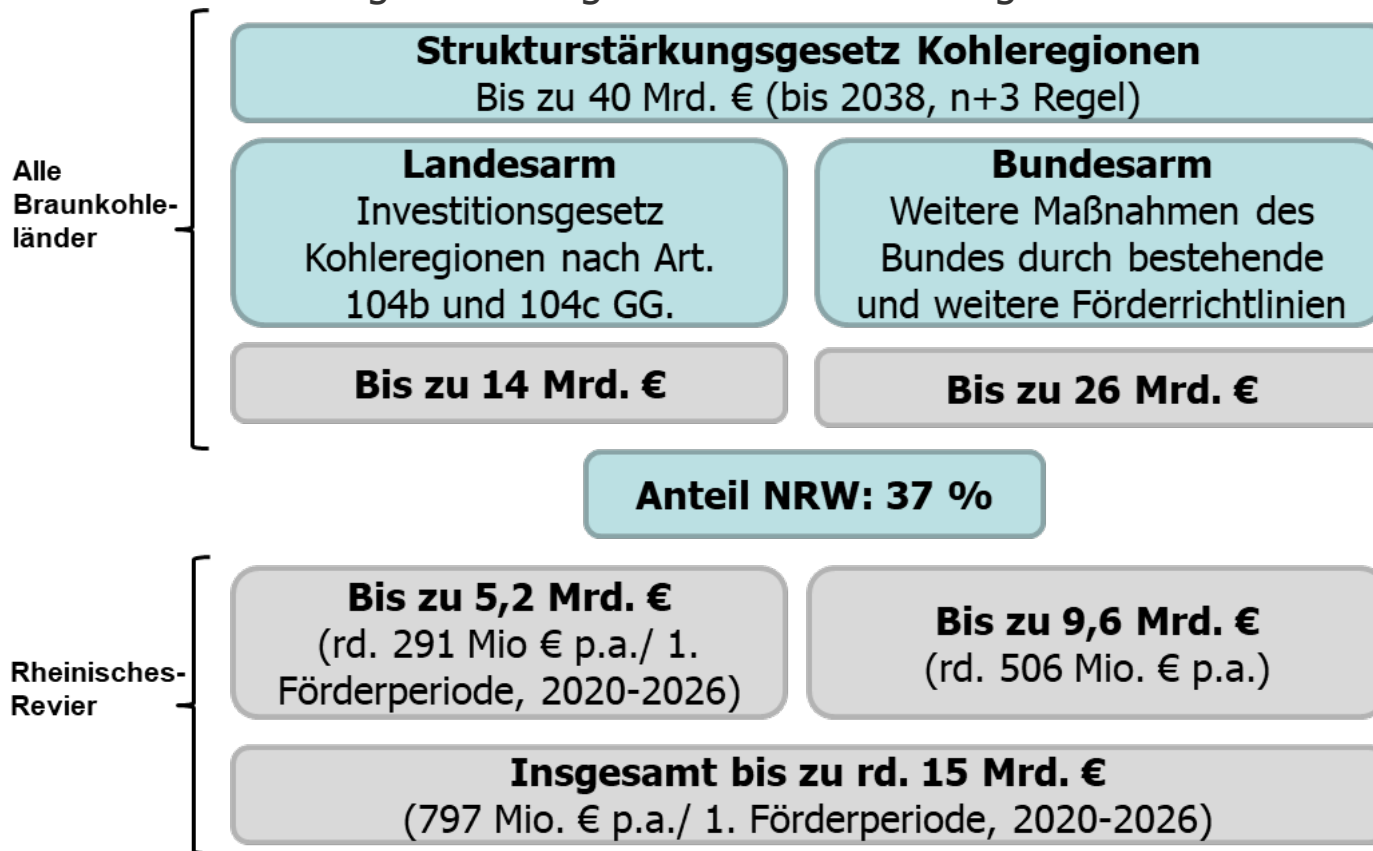
Jobs in the lignite industry*

- 9,000 people work directly for the lignite industry in the Rhenish region
- 18,000 indirect or induced jobs in and around the regional territory
- 93,000 people work in energy-intensive industries that currently depend on lignite supply
- In 2016, the gross value added in the lignite industry was around EUR 1.7 bn
 - accounting for 2.4% of the regional value added

*Source: Final Report – Commission on Growth, Structural Change and Employment (2019)

Structural Development Act

Structural-policy and investment programmes are needed to support coal mining regions through the structural change



Includes EU funding from the JTF!!

Ministerium für Wirtschaft, Innovation,
Digitalisierung und Energie
des Landes Nordrhein-Westfalen



Implementation of structural change at Federal state and regional levels:

Coordinating authority for the state of NRW

is the Ministry of Economic Affairs, Innovation, Digitalisation and Energy



Zukunftsagentur Rheinisches Revier

will act as the “institution responsible” for the structural change

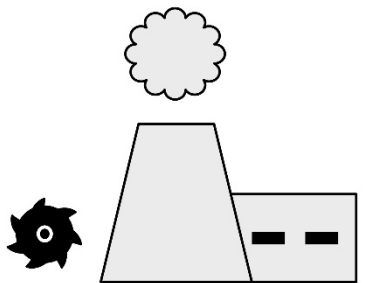


“Revierknoten” (regional hub)

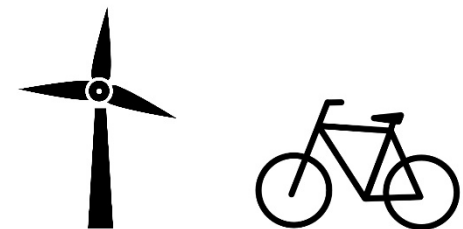
for the sectors including energy and energy-intensive industries, transport and future mobility, resources and agrobusiness, international building and technology exhibition

Key decision: New perspectives for the Rhenish region

- Adoption of draft by the German Cabinet on 6 October 2020
- Outlining of key issues involved in the future spatial development (lignite plan and beyond)
- “Economic and Structural Programme 1.0 (WSP)” of ZRR = key substantive perspective for future funding support under the Structural Development Act.
 - The WSP will be continuously adapted throughout the funding period
 - The WSP focuses on two key concepts for the region: **“European model region for energy supply and resource security”** and **“Mobility region of the future”**.



Lignite region



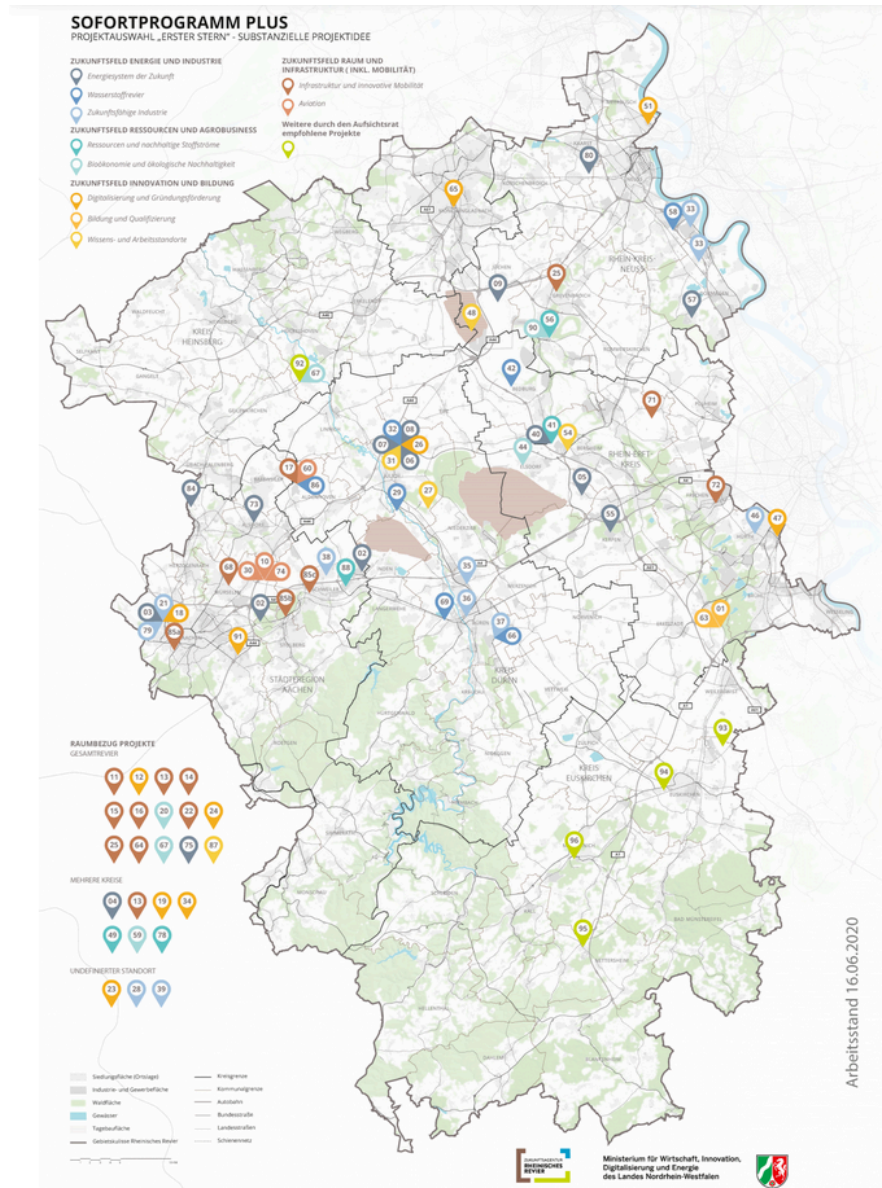
Modern, climate-friendly energy and industrial region + model mobility region

The SofortprogrammPlus [Immediate Action PLUS Programme] regulates ongoing funding for the first projects

- under the **'Sofortprogramm'**,
- under the **Guidelines to the Structural Development Act**
- and for projects under the **Structural Development Act**

83 projects were awarded the **FIRST STAR** by the Board on 26 May 2020 and are now aiming for further qualification

19 projects already received the **SECOND STAR** from the Board on 28 August 2020





‘STARK’ funding programme

‘**STARK**’ -> federal funding programme to accelerate the transition in coal-mining regions and to make them models of greenhouse-gas-neutral, resource-efficient development

- Funding for projects that drive the transition of economic structures in coal mining regions to ecologically, economically and socially sustainable development
- Grants for non-investment-related measures for structural development
- Proportionate project funding covering up to 90 per cent of eligible expenses or costs

Grouping of eligible fields into eleven categories:

- Networking
- Knowledge and technology transfer
- Consultancy
- Qualification/Training and development
- Effective adjustment of financial assistance from public funds
- Planning capacities and regional development organisations
- Community spirit and a common understanding of the future
- Foreign trade
- Scientific support of the transition processes
- Strengthening entrepreneurial action
- Innovative approaches

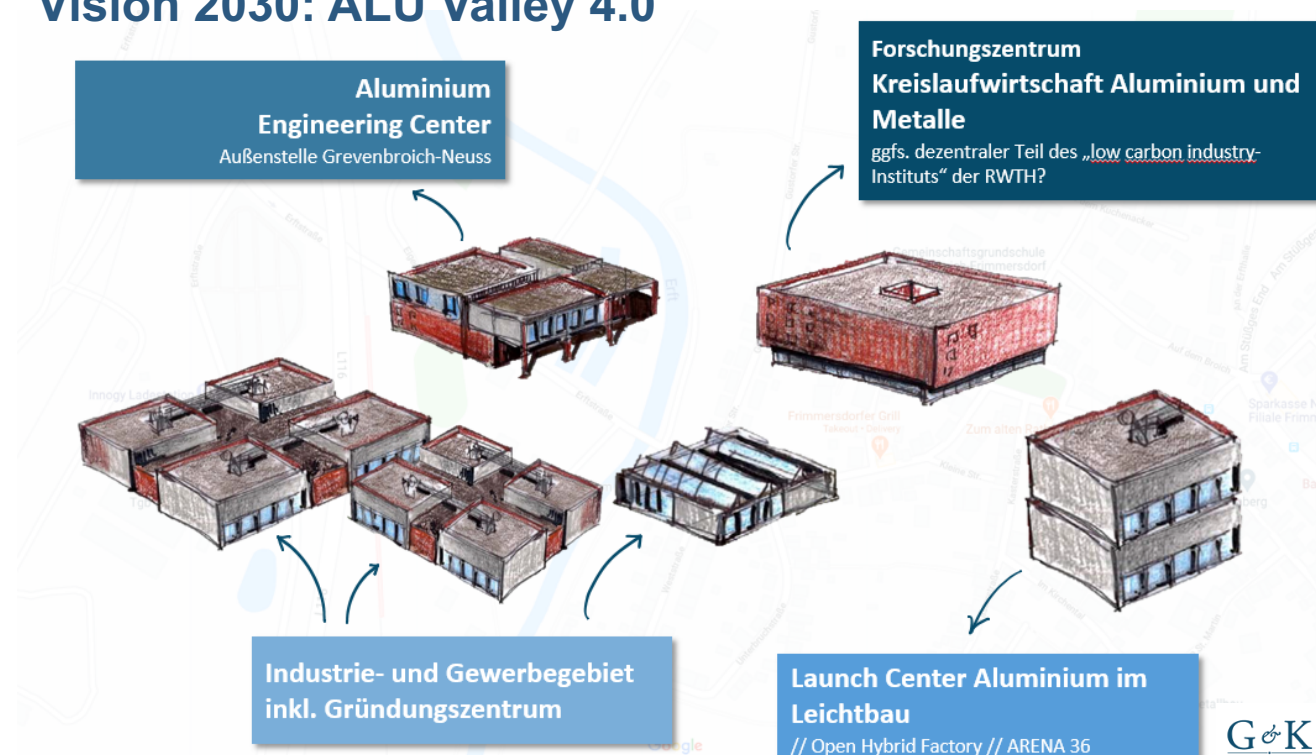
Mainstream programme from 2021

- The mainstream programme starts in 2020, once the national and state regulations are in place.
- There will be **calls for projects in the various future-oriented fields** – the order will still need to be discussed in the committees.
- The first themed calls for funding will be launched in 2020 to 2022. These will be repeated on a yearly or two-yearly basis.

Structural change projects in the RDN

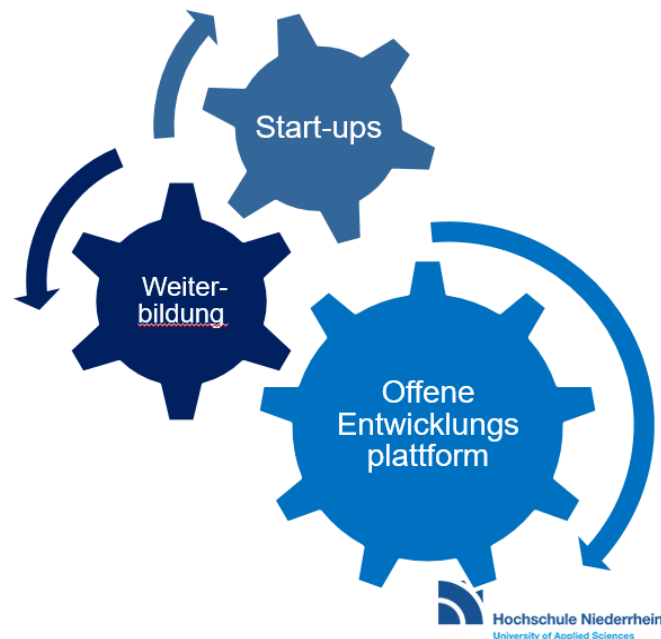
- ALU Valley 4.0
 - Successful completion of the first project phase funded under the "Unternehmen Revier" (Mining Area Enterprise) support programme
 - Project phase 2 in preparation

Vision 2030: ALU Valley 4.0



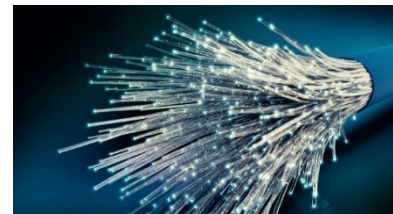
Structural change projects in the RDN

- Launch centre for the food industry (LCL)
 - Project focused on comprehensive and integrated support for the RDN food industry
 - Project was submitted for the ZRR SofortprogrammPlus (awarded the second star)
 - Project presentation to Ursula Heinen-Esser, Minister for Environment, Agriculture, Nature Conservation and Consumer Protection of the State of North Rhine-Westphalia.



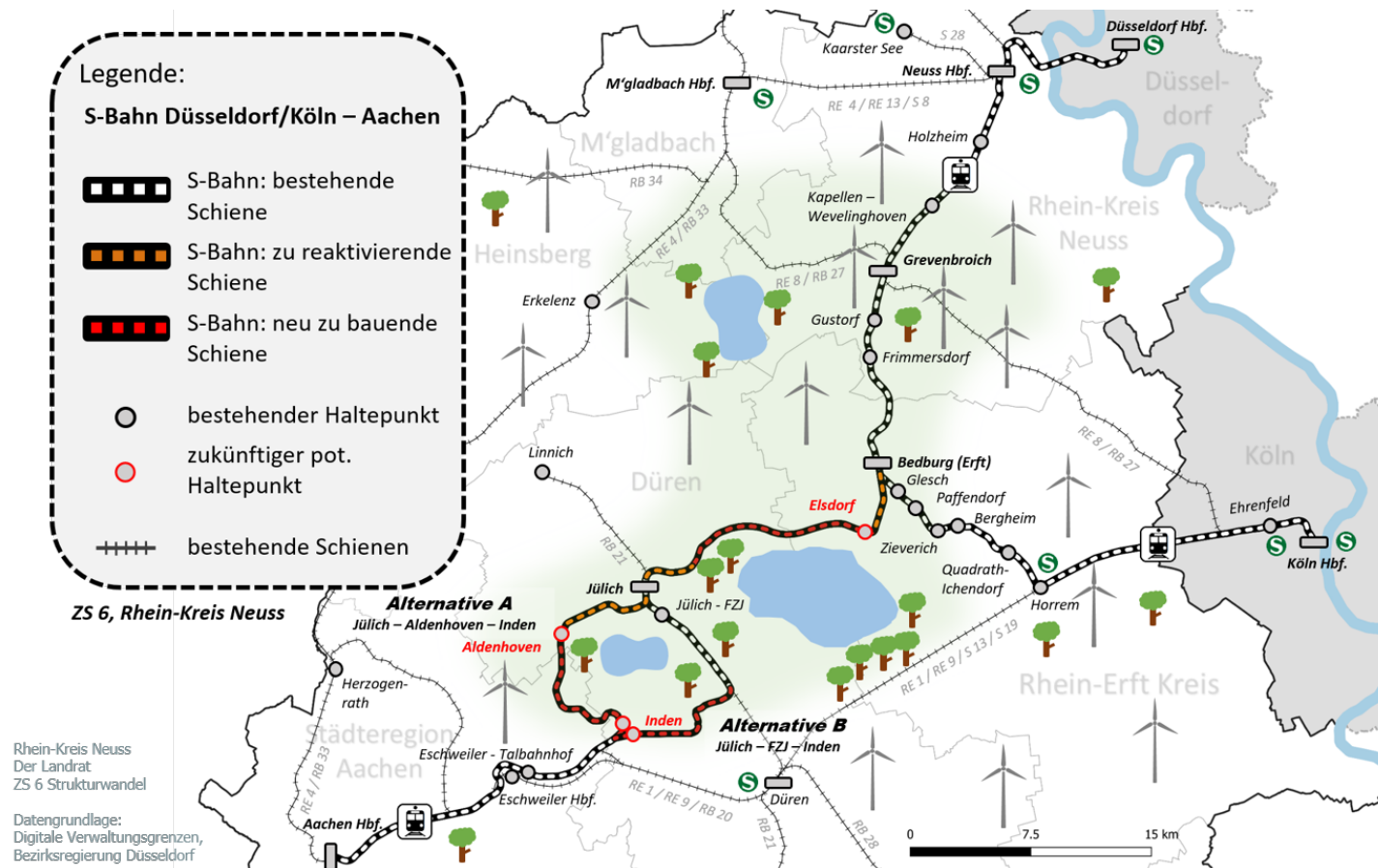
Structural change projects in the RDN

- **‘Reviermanagement Gigabit’**
 - Coordination office for the strategic implementation of gigabit-capable networks
 - Award of the second star – (SofortprogrammPlus)
 - “STARK” funding programme of the Federal Office for Economic Affairs and Export Control (BAFA) was identified as potential funding instrument
 - A preliminary draft application is currently drawn up and will be submitted as agreed with MWIDE
- **Gigabit model location, 5G and autonomous driving**
 - Project for the construction of gigabit-capable networks and for the development of the 5G mobile standard
 - Identification of alternative funding options
 - Specifications for a market analysis are currently drawn up, i.e. this application can be submitted in December for the second star



Structural change projects in the RDN

- Rhenish region rail
 - Enshrined in Section 21, Part 2 of the Structural Development Act – Development of rail infrastructures



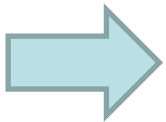
Structural change projects in the RDN

- Global Entrepreneurship Centre (GEC)
 - Project goal: Settlement of the world's best entrepreneurs focused on sustainability and climate protection in the Rhenish region
 - Submitted for the SofortprogrammPlus (award of the first star)
- Campus Changeneering
 - Project kick-off was on 29 July
 - Currently, preparation of a regional economic analysis of the Rhine District of Neuss as a location for the chemical, metal and healthcare industries in the context of structural change

Analysis of the RDN economic area

Project background

- The RDN stands out due to its prominent location within the highly dense economic area along the river Rhine and as part of the most populated lignite mining region
 - ➔ Dynamic region undergoing spatial and economic development and change
- Phase-out of coal mining and coal-fired power generation by 2038 intensifies these processes
- These changes must be seen as an opportunity for common, sustainable and environmentally viable spatial and economic development



A common base of relevant information is needed as guidance, to stimulate development!

Rhine District of Neuss and hydrogen

- RDN as industrial region with hydrogen potential
 - ➔ Potential for (secondary) industrial production of hydrogen
 - ➔ Potential available for production of green hydrogen through wind power
 - ➔ Piping infrastructures for transport throughout the district
- RDN is already active in hydrogen technology sector
 - ➔ Member of the Düssel.Rhine.Wupper Hydrogen Competence Region in the context of the funding competition, 'NRW model municipality/region for hydrogen mobility'
- Hydrogen a key topic in the district's infrastructure and mobility hub

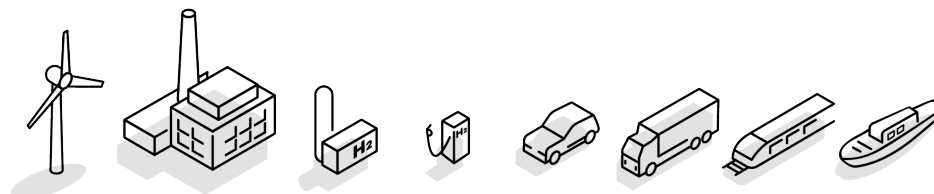
Düssel. Rhine. Wupper – the Hydrogen Competence Region



KOMPETENZREGION
WASSERSTOFF
Düssel. Rhein. Wupper

- **Strategic alliance** of four municipalities and three industrial partners in the 'NRW model municipality/region for hydrogen mobility' competition
 - ➔ Development of a detailed concept for submission
- Growing number of other, associated partners from all areas of mobility and logistics
- Objective: Exploring the interaction of different hydrogen technologies, developing distribution channels and progressively establishing a **full-scale efficient and economical hydrogen system**

Workshop 1 | Kompetenzregion Wasserstoff DRW



Landeshauptstadt
Düsseldorf



STADT WUPPERTAL



Hydrogen Competence Region wins national competition



Hydrogen hub RDN/ Rhineland

Constitutive meeting on 19 November 2020

Stakeholders from business, industry, politics, government and society

The H2 Hub Rhein-Kreis Neuss e.V. **aims** to create a framework for “energy sources of the future” that establishes the Rhine District of Neuss as a European hub for the hydrogen industry.

Next steps

- Region-wide bicycle route concept
 - Awaiting grant approval
- ALU Valley 4.0 Rhenish Region Phase 2
- Accelerated planning for reuse of the Frimmersdorf power station site
- Reuse of the future Neurath power station conversion areas
- Use of the Neurath regional development plan area
- Model of sustainable settlement development

Conclusion

Active involvement in shaping the structural change is one of the key challenges of the future!!

Thank you for your attention!

Cooperação ao desenvolvimento em nível municipal



**Métodos e instrumentos para a
implementação de cooperações municipais**

O palestrante



- Delegado para proteção climática e sustentabilidade

Cooperação ao desenvolvimento em nível municipal

1) Distrito Renano de Neuss (Rhein-Kreis Neuss)

- Desde 2010: Primeiro distrito de comércio justo



Cooperação ao desenvolvimento em nível municipal

- 2018: Assinatura da resolução da Agenda 2030 da Associação de Cidades e Municípios da Alemanha



Cooperação ao desenvolvimento em nível municipal

➤ Desde 2018: Cooperação municipal com o município de Campohermoso em Boyacá (Colômbia)

1. Agricultura orgânica
2. Energias renováveis



Cooperação ao desenvolvimento em nível municipal

➤ Participação em três projetos federais:

1. Cooperação municipal para a sustentabilidade (Kommunale Nachhaltigkeitspartnerschaften)
2. Desenvolvimento sustentável através de projetos de cooperação (Nachhaltige Kommunalentwicklung durch Partnerschaftsprojekte – Nakopa)
3. Pacote solidário de Corona (Corona Solidarpaket)



Cooperação ao desenvolvimento em nível municipal

2) Estrutura federal de apoio aos municípios:



Instituição federal coordenadora

Ministério Federal da Cooperação Econômica e do Desenvolvimento
(Bundesministerium für wirtschaftliche Zusammenarbeit und Entwicklung
(BMZ))



Agência coordenadora para os municípios

Centro de Serviços para os municípios em um só Mundo (Servicestelle
Kommunen in der Einen Welt) da Engagement Global gGmbH



Cooperação ao desenvolvimento em nível municipal

3) Conclusão

- **Partes da apresentada estrutura** podiam servir como **modelo/inspiração** para futuras cooperações entre entidades alemãs e brasileiras ao nível municipal no contexto da **Transição Justa**



Muito obrigado pela atenção!